



RSC060604

**Industry Standards**  
UL 50, Types 1 & 3R  
CSA Certified, Type 1 & 3R  
NEMA/EEMAC Type 1 & 3R

 UL File E6924

 CSA File LL66078

**FEATURES-SPECIFICATIONS**

**Applications**

Designed for use as wiring boxes and junction boxes. Provide protection in outdoor applications against rain, sleet, and snow, or indoors against dripping water.

**Construction**

- Bodies and doors fabricated from 16, 14, or 12 gauge carbon steel and pre-galvanized steel (reference table)
- Drip shield top and smooth seamless sides and front
- Knockouts are standard on bottom of 4.00" and 6.00" deep enclosures (reference table)
- A slip-on reversible cover is securely fastened with screws located along bottom edge
- No gasketing is required
- Hasp for padlocking or meter seal is provided

**Finish**

- ANSI-61 gray polyester powder inside and out over phosphatized surfaces over carbon steel
- Pre-galvanized finish with phosphatized surface

**Accessories**

- See pages J1-J19

**NEW PRODUCT IN 2003**

\*Not UL Listed. No hasp or meter seal. Must specify CSA Label when ordering.

Notes:

For removal of cover, move downward, then outward.

4.00x4.00x4.00 only has 2 mounting holes centered horizontally.

4.00x6.00x4.00 only has 2 mounting holes centered vertically.

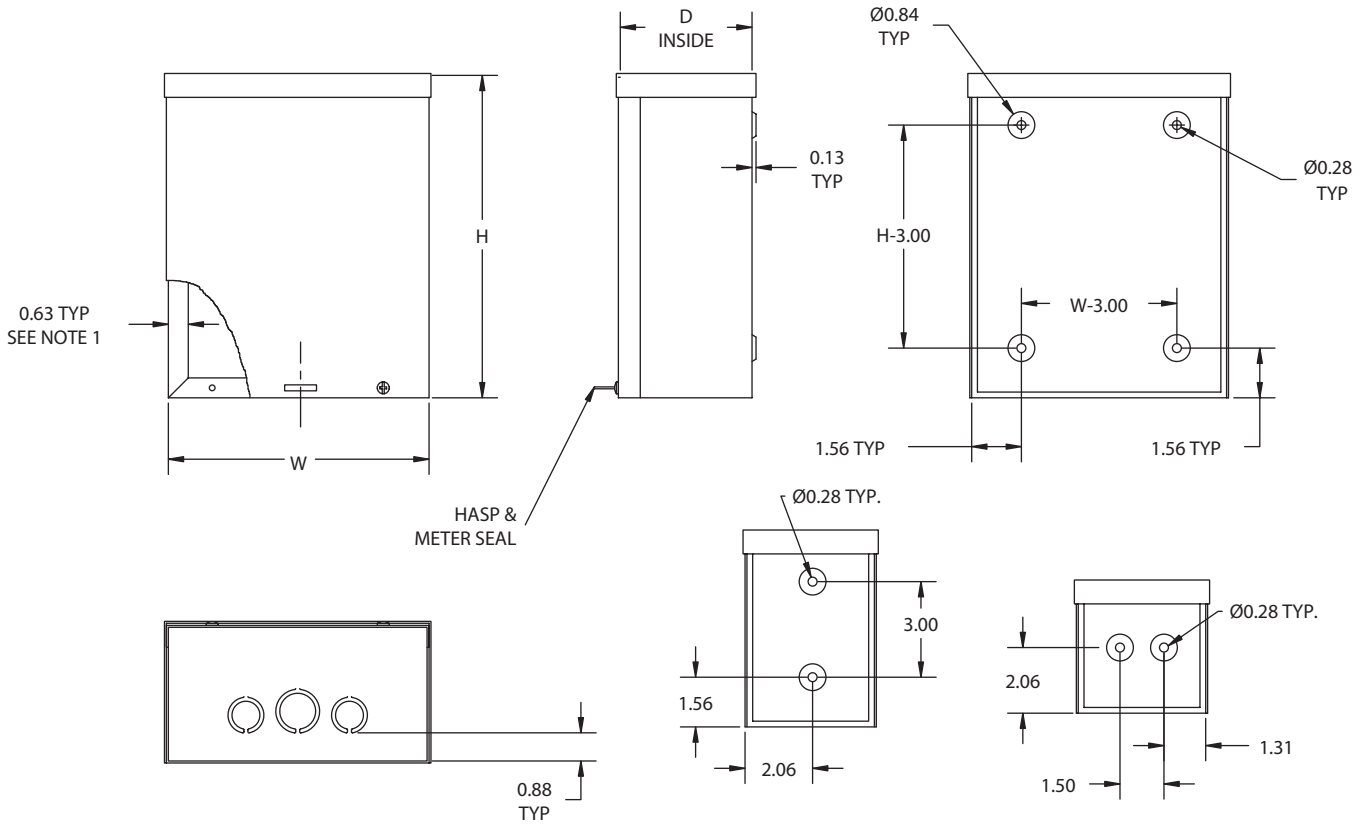
Note: 8", 10" and 12" deep enclosures do not have mounting embosses in back of enclosure, only mounting holes.

RSC SERIES SCREW COVER ENCLOSURES				
CATALOG NUMBER		BODY/DOOR STEEL GAUGE	ENCLOSURE SIZE H+ 1/8", W+ 1/8", D+ 3/16"	KNOCKOUT PATTERNS
PAINTED	GALVANIZED			
RSC040404*	RSC040404G ◀	16/16	4.00x4.00x4.00 (102x102x102)	A
RSC040604*	RSC040604G ◀	16/16	6.00x4.00x4.00 (152x102x102)	A
RSC060604	RSC060604G ◀	16/16	6.00x6.00x4.00 (152x152x102)	A-B-A
RSC060804	RSC060804G ◀	16/16	8.00x6.00x4.00 (203x152x102)	A-B-A
RSC080804	RSC080804G ◀	16/16	8.00x8.00x4.00 (203x203x102)	A-B-A
RSC081004	RSC081004G ◀	16/16	10.00x8.00x4.00 (254x203x102)	A-B-A
RSC101004	RSC101004G ◀	16/16	10.00x10.00x4.00 (254x254x102)	B-A-F-F-A
RSC101204	RSC101204G ◀	16/16	12.00x10.00x4.00 (305x254x102)	B-A-F-F-A
RSC121204	RSC121204G ◀	16/16	12.00x12.00x4.00 (305x305x102)	B-A-F-F-A-B
RSC121504	RSC121504G ◀	16/16	15.00x12.00x4.00 (381x305x102)	B-A-F-F-A-B
RSC181804 ◀	RSC181804G ◀	16/16	18.00x18.00x4.00 (457x457x102)	A-B-A-F-F-A-B-A
RSC060606	RSC060606G ◀	16/16	6.00x6.00x6.00 (152x152x152)	A-B-A
RSC060806	RSC060806G ◀	16/16	8.00x6.00x6.00 (203x152x152)	A-B-A
RSC080806	RSC080806G ◀	16/16	8.00x8.00x6.00 (203x203x152)	A-B-A
RSC081006	RSC081006G ◀	16/16	10.00x8.00x6.00 (254x203x152)	A-B-A
RSC081206	RSC081206G ◀	16/16	12.00x8.00x6.00 (305x203x152)	A-B-A
RSC101006	RSC101006G ◀	16/16	10.00x10.00x6.00 (254x254x152)	B-A-F-F-A
RSC101206	RSC101206G ◀	16/16	12.00x10.00x6.00 (305x254x152)	B-A-F-F-A
RSC121206	RSC121206G ◀	16/16	12.00x12.00x6.00 (305x305x152)	B-A-F-F-A-B
RSC121506	RSC121506G ◀	16/16	15.00x12.00x6.00 (381x305x152)	B-A-F-F-A-B
RSC121806	RSC121806G ◀	16/16	18.00x12.00x6.00 (457x305x152)	B-A-F-F-A-B
RSC151806	RSC151806G ◀	16/16	18.00x15.00x6.00 (457x381x152)	A-B-A-F-F-A-B-A
RSC181806	RSC181806G ◀	16/16	18.00x18.00x6.00 (457x457x152)	A-B-A-F-F-A-B-A
RSC182406	RSC182406G ◀	16/16	24.00x18.00x6.00 (610x457x152)	A-B-A-F-F-A-B-A
RSC242406 ◀	RSC242406G ◀	14/14	24.00x24.00x6.00 (610x610x152)	A-B-A-F-F-A-B-A
+ RSC121208	RSC121208G ◀	16/16	12.00x12.00x8.00 (305x305x203)	No Knockouts
+ RSC121808 ◀	RSC121808G ◀	16/16	18.00x12.00x8.00 (457x305x203)	No Knockouts
+ RSC151808	RSC151808G ◀	16/16	18.00x15.00x8.00 (457x381x203)	No Knockouts
+ RSC181808 ◀	RSC181808G ◀	16/16	18.00x18.00x8.00 (457x457x203)	No Knockouts
+ RSC182408	RSC182408G ◀	14/14	24.00x18.00x8.00 (610x457x203)	No Knockouts
+ RSC202408 ◀	RSC202408G ◀	14/14	24.00x20.00x8.00 (610x508x203)	No Knockouts
+ RSC242408	RSC242408G ◀	14/14	24.00x24.00x8.00 (610x610x203)	No Knockouts
+ RSC243008	RSC243008G ◀	14/14	30.00x24.00x8.00 (762x610x203)	No Knockouts
+ RSC121210	RSC121210G ◀	16/16	12.00x12.00x10.00 (305x305x254)	No Knockouts
+ RSC161610	RSC161610G ◀	16/16	16.00x16.00x10.00 (406x406x254)	No Knockouts
+ RSC242412	RSC242412G ◀	14/14	24.00x24.00x12.00 (610x610x305)	No Knockouts
+ RSC243612	RSC243612G ◀	12/12	36.00x24.00x12.00 (914x610x305)	No Knockouts
+ RSC303012 ◀	RSC303012G ◀	12/12	30.00x30.00x12.00 (762x762x305)	No Knockouts
+ RSC303612 ◀	RSC303612G ◀	12/12	36.00x30.00x12.00 (914x762x305)	No Knockouts
+ RSC363612 ◀	RSC363612G ◀	12/12	36.00x36.00x12.00 (914x914x305)	No Knockouts
+ RSC242416	RSC242416G ◀	14/14	24.00x24.00x16.00 (610x610x406)	No Knockouts
+ RSC303016	RSC303016G ◀	12/12	30.00x30.00x16.00 (762x762x406)	No Knockouts
+ RSC363616	RSC363616G ◀	12/12	36.00x36.00x16.00 (914x914x406)	No Knockouts
+ RSC364816 ◀	RSC364816G ◀	12/12	48.00x36.00x16.00 (1219x914x406)	No Knockouts

(+) All products, unless otherwise denoted by a (+), are: H+1/8", W+1/8", D+3/16"

DATA SUBJECT TO CHANGE WITHOUT NOTICE





**NOTES:**

- 1. Enclosures with D = 8.00" or more do not have an internal flange.

**4.00" X 6.00"  
MOUNTING**

**4.00" X 4.00"  
MOUNTING**

**Knockout Patterns**

- A -- 1/2" TO 3/4"
- B -- 3/4" TO 1"
- F -- 1" TO 1-1/4"

